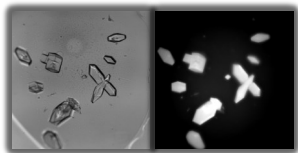
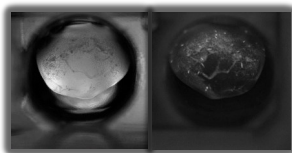


## About

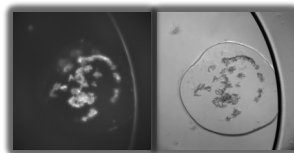
SWISSCI and JAN Scientific have partnered to bring the UVEX crystal imaging systems to the market. With over 100 installations around the world the UVEX is rapidly becoming the crystallographers go-to tool for rapid detection and intuitive classification of protein crystals.



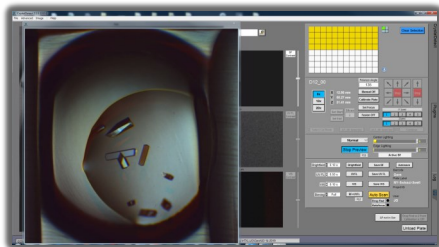
*Detect protein crystals with ease*



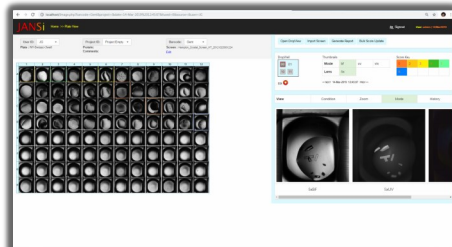
*Detect micro-crystals hidden in precipitate*



*Powerful imaging of protein crystals in LCP*



*Crystal detect: a powerful interface to control the UVEX*



*Webview is an intuitive, multi-seated and unrestricted viewing and management program*



## FACTS

- Over 100 installations
- Industry leading resolution
- UV imaging as standard

## FEATURES

- LED light sources
- Resolution 0.2 micron/pixel
- Multi seated software

## Product Specifications

- Autofocus and drop centring
- Extended Depth Imaging
- Cooled high-efficiency 6 MP monochrome UV camera
- LED light sources, low maintenance and long lasting
- An industry-leading resolution of 0.2 micron/pixel
- Objectives; 5X, 10X (or 15X) and 20X
- UV excitation/emission optimised for Trp fluorescence
- Automated imaging of ANSI/SLAS 1-2004 crystallisation plates
- Intuitive software and management software with computer and monitor.
- Optional; UV absorbance, colour cross-polarises, additional objectives
- UVEXp can be retrofitted into UVEX plate hotels.
- Dimensions: 20 x 35 x 50 cm. Weight: 16 kg. Power: 110-240 V 50 Hz/60 Hz 120 kWh

### Order Information

**Item:** UVEXp Imaging System

**Code:** UVEXp

**Details:** See Specifications

**Contact:** sales@swissci.com

**Web:** www.swissci.com