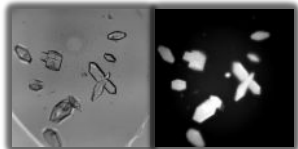
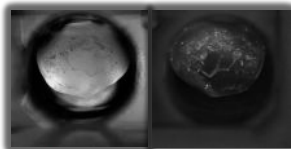


About

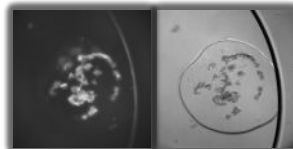
SWISSCI and JAN Scientific have partnered to bring the UVEX crystal imaging systems to the market. With over 300 installations around the world the UVEX is rapidly becoming the crystallographers go-to tool for rapid detection and intuitive classification of protein crystals.



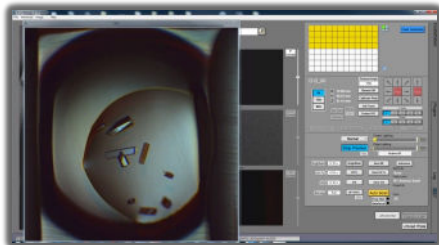
Detect protein crystals with ease



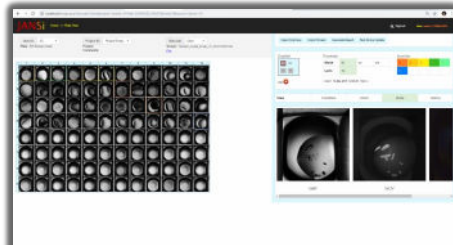
Detect micro-crystals hidden in precipitate



Powerful imaging of protein crystals in LCP



Crystal detect: a powerful interface to control the UVEX



Webview is an intuitive, multi-seated and unrestricted viewing and management program

Product Specifications

- Low vibration operation to move plates
- Built-in sensors to monitor the status of a plate
- Collision detection and recovery
- Built-in barcode scanner
- configurable storage shelves for standard and low, high-profile or LCP SBS plates
- Shelf capacity can be changed in field (some restrictions apply)
- Built in IR cameras
- Barcode printer with 7000 labels
- Smooth transfer of plates
- Multiple configurations

Options:

- Include UVEXp - see datasheet for spec. (available for both models)
- Temperature control (available for UVEXps256/344)
- Peltier temperature regulation (available for UVEXps640/860)

UVEXps256/344: Dimensions w90 x d72 x h212 cm. Weight 350 kg.

UVEXps640/860: Dimensions w90 x d95 x h212 cm. Weight 450 kg.

Power: 110-240 V 50 Hz/60 Hz 120 kWh



FACTS

- Over 300 installations
- Industry leading resolution
- UV imaging as standard

FEATURES

- LED Light sources
- Resolution 0.2 micron/pixel
- Multi seated software
- Multiple configurations

Order Information

Item: UVEXps Plate Hotels

Codes:

UVEX-PS-256 / UVEX-PS-256-TC

UVEX-PS-344 / UVEX-PS-344-TC

UVEX-PS-640 / UVEX-PS-640-PTR

UVEX-PS-860 / UVEX-PS-860-PTR

Details: See Specifications

Contact: sales@swissci.com

Web: www.swissci.com