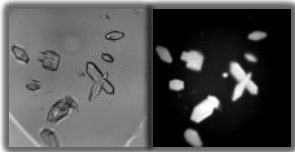
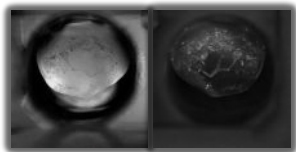


## About

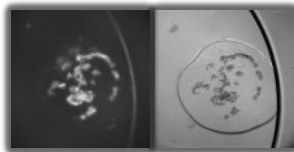
SWISSCI and JAN Scientific have partnered to bring the UVEX crystal imaging systems to the market. With over 300 installations around the world the UVEX is rapidly becoming the crystallographers go-to tool for rapid detection and intuitive classification of protein crystals. An industry leading resolution camera with optional objectives that give you crystal clear images. The UVEX systems are carefully designed to meet your imaging needs.



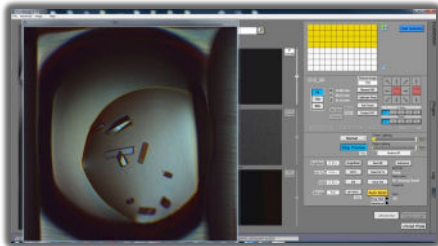
*Detect protein crystals with ease*



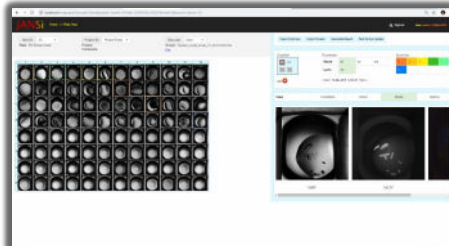
*Detect micro-crystals hidden in precipitate*



*Powerful imaging of protein crystals in LCP*



*Crystal detect: a powerful interface to control the UVEX*



*Webview is an intuitive, multi-seated and unrestricted viewing and management program*

## Product Specifications

- Cooled, high-efficiency 6 MP monochrome CMOS UV camera.
- An industry-leading resolution of 0.2 micron/pixel
- Proprietary design allowing brightfield and fluorescence images
- Typical scan time for a 96-well plate is 2.5 minutes with a pair of brightfield and UV fluorescence images
- Objectives of 5x, 10x (or 15x), 20x as standard
- UV optimized optics for low-intensity excitation and high contrast detection.
- Intuitive software and management software with computer and monitor.
- Multi-user Software
- Optional: UV absorbance, colour cross-polarises, additional objectives
- UVEXp can be retrofitted into UVEX plate hotels.
- Dimensions: 20 x 35 x 50 cm. Weight: 16 kg. Power: 110-240 V 50 Hz/60 Hz 120 kWh



## FEATURES

- Industry leading resolution
- Easy to use
- Intuitive Software
- UV imaging as standard
- LED light sources
- Low maintenance and Long lasting
- Multi-user Software
- Resolution 0.2 micron/pixel
- Automated imaging of ANSI/SLAS 1-2004 plates

## Order Information

**Item:** UVEXp Imaging System

**Code:** UVEXp

**Details:** See Specifications

**Contact:** sales@swissci.com

**Web:** www.swissci.com